

JSCS38 Series
Absolute Encoder
Sensing method Magnetic
Functional principle Singleturn
Solid shaft $\Phi 6\text{mm}$, Blind hollow shaft $\Phi 8\text{mm}$
Max. resolution 16384 /14bit
Interface CANopen
Supply voltage 10-30VDC
Protection IP54/IP65

Mechanical characteristics

Shaft diameter	Solid shaft $\Phi 6\text{mm}$; Blind hollow shaft $\Phi 8\text{mm}$
Protection	IP54/IP65
Rotational speed	6000 rpm
Shaft loading	Max. $\leq 25\text{N}$ Axial; Max. $\leq 50\text{N}$ Radial
Shock resistance	50g, 6ms
Vibration resistance	10g, 10...2000Hz
Bearing life	10^9 turns
Material	Aluminium alloy
Shell material	Aluminum alloy/Tensile iron shell +Black painted
Operating temperature	$-20^{\circ}\text{C} \dots +80^{\circ}\text{C}$
Storage temperature	$-30^{\circ}\text{C} \dots +85^{\circ}\text{C}$
Weight	$\approx 85\text{g}$
Wiring method	Radial direction

Electrical characteristics

Supply voltage	10-30VDC
No-load current	$< 60\text{mA}$
Interface	CANopen
Transmission rate	Max 1MBit/s
Code	Binary
Baud rate	Programmable setting
The node address	Programmable setting
Anti-interference	EN61000-6-2
Launch interference	EN61000-6-4
Circuit protection	Surge protection, Reverse polarity protection, ESD protection

Terminal assignment

Signal		GND	+Ub	CAN_0V	CAN_H	CAN_L
Color		WH	BN	GY	GN	YE

Ordering information

JSCS38	XX	B	6	B	13	S9	0	T	10-30	R	2	/	A	XXXX
①	②	③	④	⑤	⑥	⑦	⑧	⑨	⑩					
① Extended No. XX	② Shaft type S: Solid shaft B: Blind hollow shaft	③ Shaft diameter B: Blind hollow shaft 8: Φ8mm S: Solid shaft 6: Φ6mm	④ Resolution ST 12: 4096 13: 8192 14: 16384	⑤ Baud rate 6: 1000K 7: 800K 8: 500K 9: 250K 0: 125K	⑥ Supply voltage 10-30: 10-30VDC	⑦ Exit position R: Radial direction	⑧ Connection type Figure: Cable length(m)	⑨ Protection Null: IP54 A: IP65	⑩ Special code XXXX	Note: Printed in bold=standard items				

Notes: 1, Resolution available at a short notice (12bit,13bit,14bit) , other resolution on request.

2, Please chose the ordering information: Extended No.、 Shaft diameter、 Singleturn resolution、 Baud rate、 Connection type.

3, lease contact us for further electrical parameter Settings and requirements.

Ordering example: JSCS38B6B12S90T10-30R2 , Counting direction of the factory is set to clockwise increasing.

Explanation: JSCS38 series, Blind hollow shaft 6mm, Binary, Singleturn resolution ≤4096/12Bit, CANopen, Transmission rate 125k, Supply voltage 10-30V, Radial direction 2m.

Accessories (sold separately)

Note: Further stator coupling can be found in the accessories selection table.

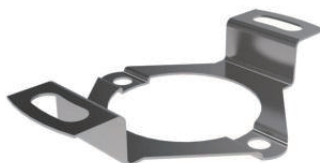
Coupling

Model (common) : 8212 6-6



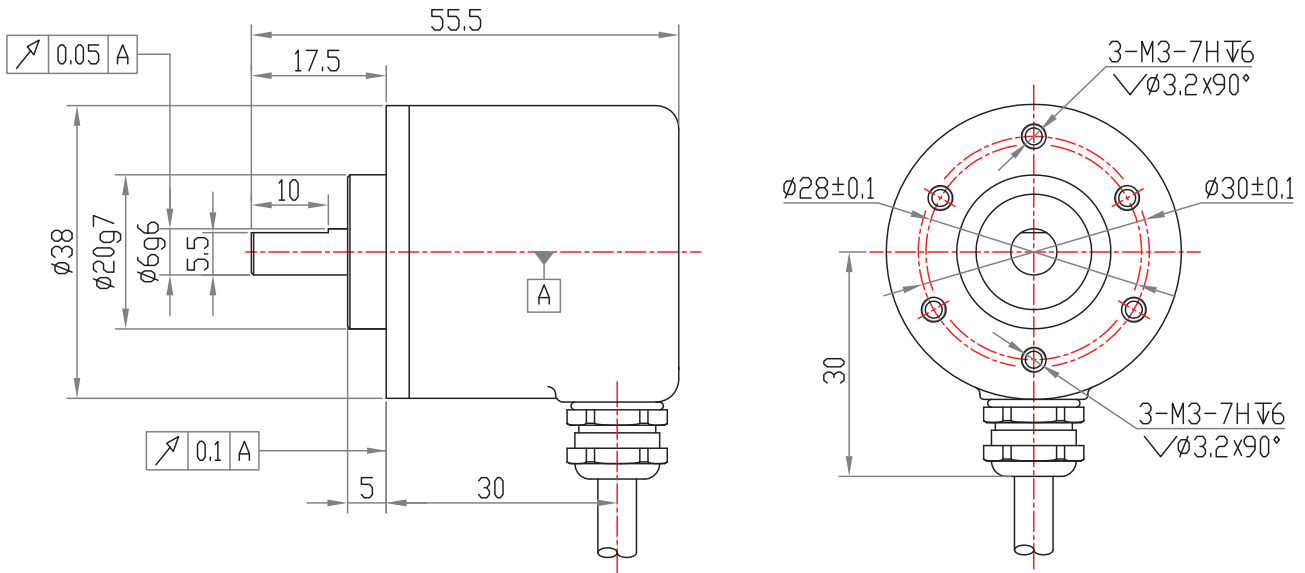
Stator coupling, double-winged

Model (common) : 8121



Dimensions

JSCS3803S



JSCS38B+8121

